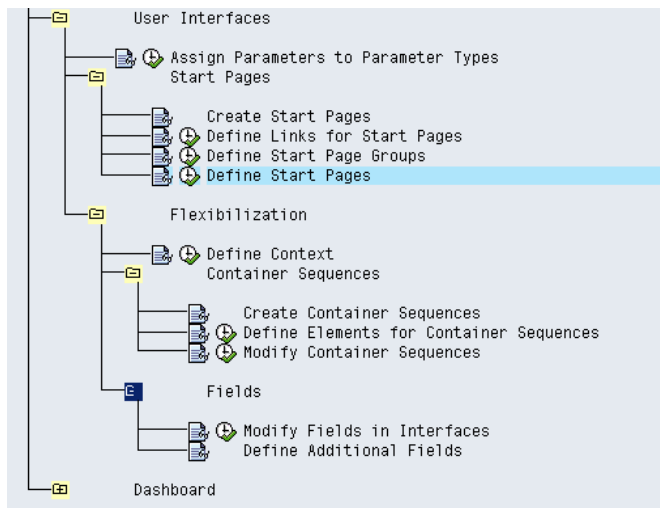


## Exercise One: Configure you own 'Start Page': BSP Configuration

If clients are still using BSP's (not ABAP Webdynpro screens) the following configuration example will be of use. If Enhancement Pack 4 has been implemented then the following IMG entries will have disappeared from the IMG.

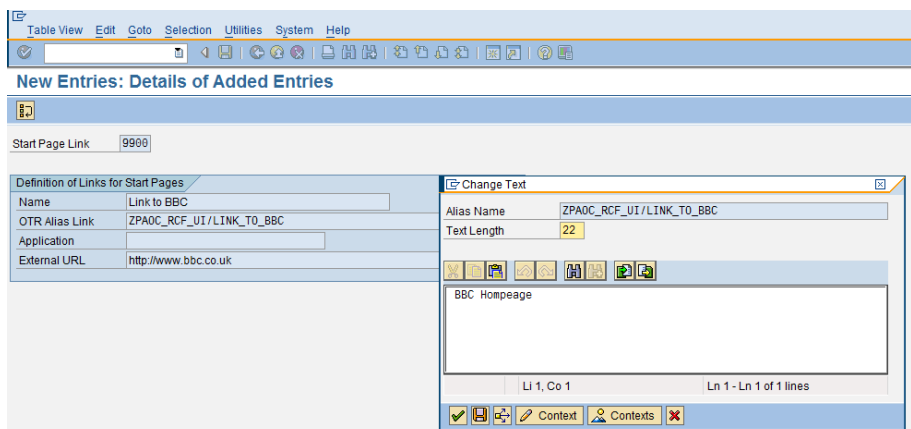
The relevant table entries have been included below so, if necessary, you can use transaction 'SM31' to configure the system.

IMG: SAP E-Recruiting > Technical Settings > User Interfaces > Settings for User Interfaces.....



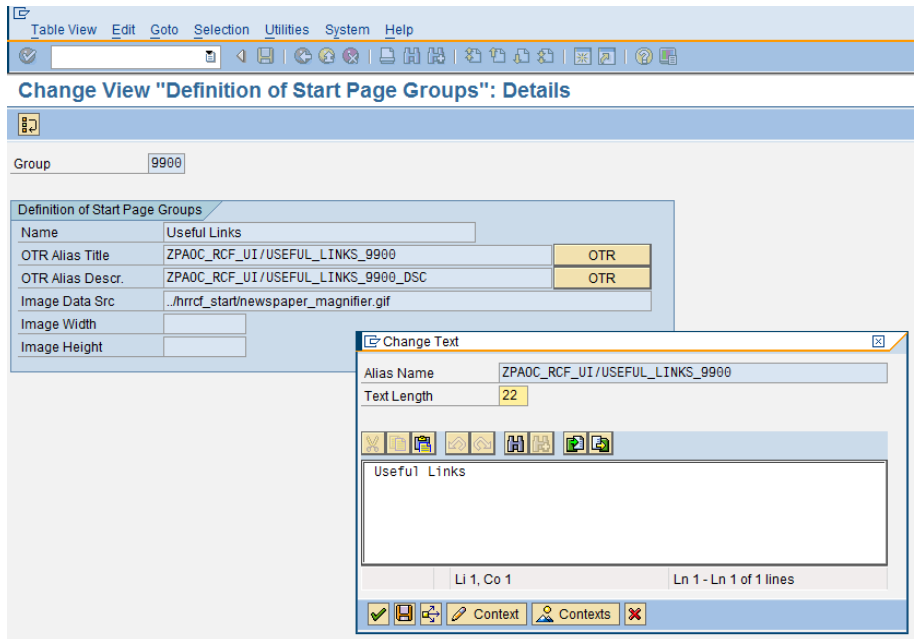
### 1. Define Links for Start Pages (Table V77RCF\_SP\_LINKC)

- Click on [New Entries]
- Enter 90XX as the Link number
- In the 'Name' field enter 'Link to BBC'
- In the 'OTR Alias Link' enter 'ZPAOC\_RCF\_UI/LINK\_TO\_BBC'
- Click on the [OTR] button

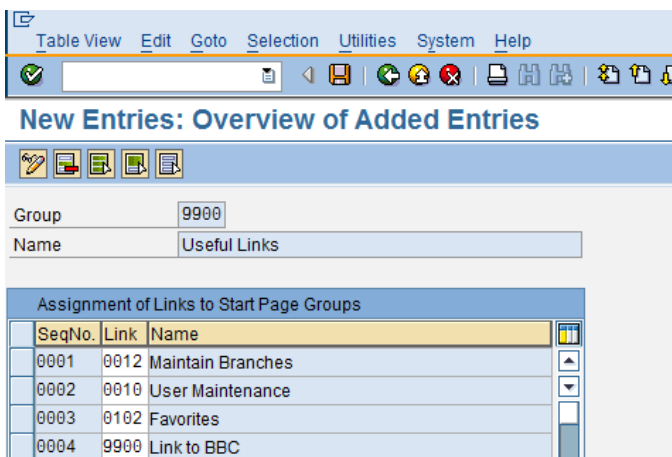
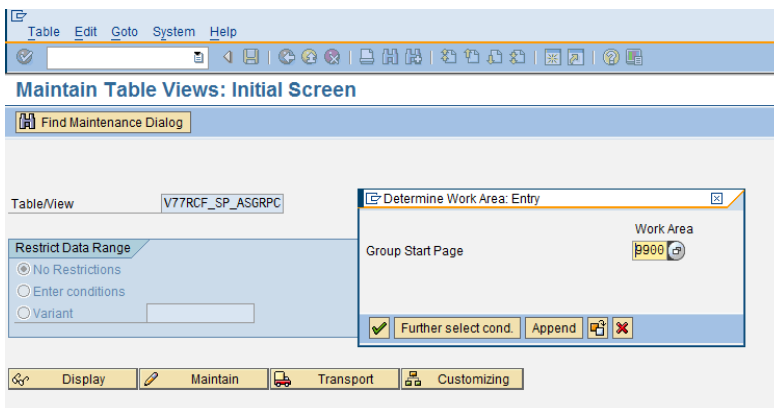


- Enter an 'External URL'

2. IMG: Define Start Page Groups (V77RCF\_SP\_GROUPE) as below. Click on the [OTR] buttons and enter suitable texts....

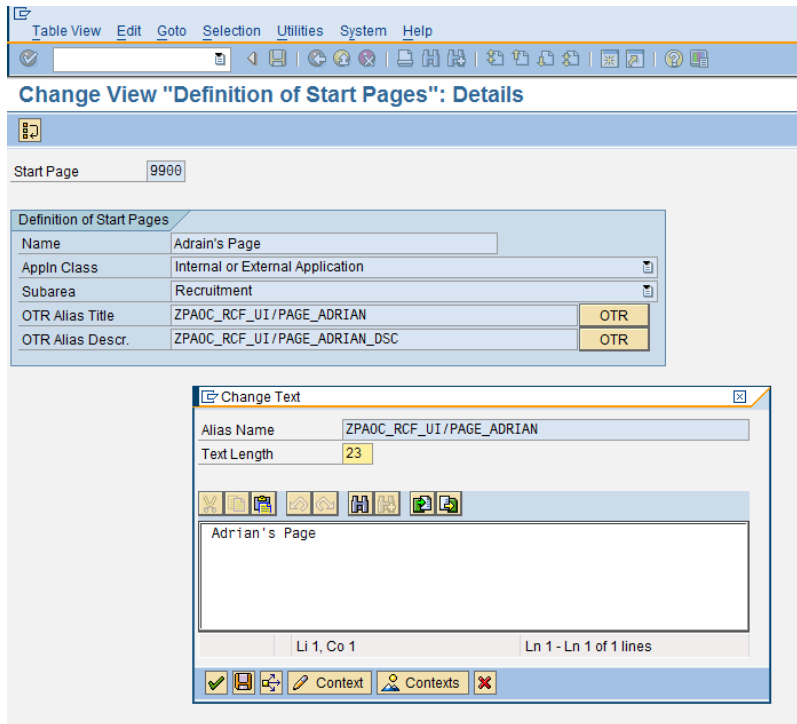


3. Assign links to the Group (Table V77RCF\_SP\_ASGRPC)

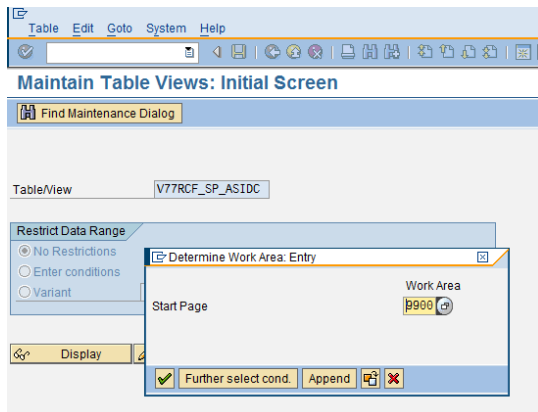


4. IMG: Define Start Page (Table: V77RCF\_SP\_IDC)

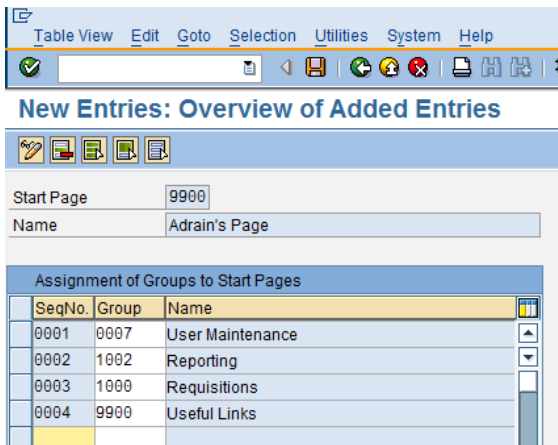
Click on the [OTR] button and provide suitable texts.....



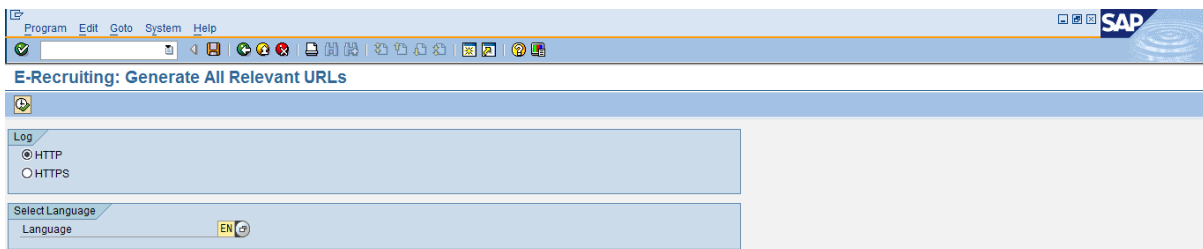
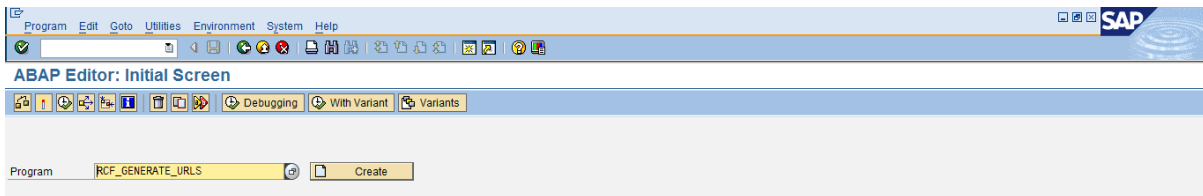
5. Assign Groups to the Page (Table: V77RCF\_SP\_ASIDC)



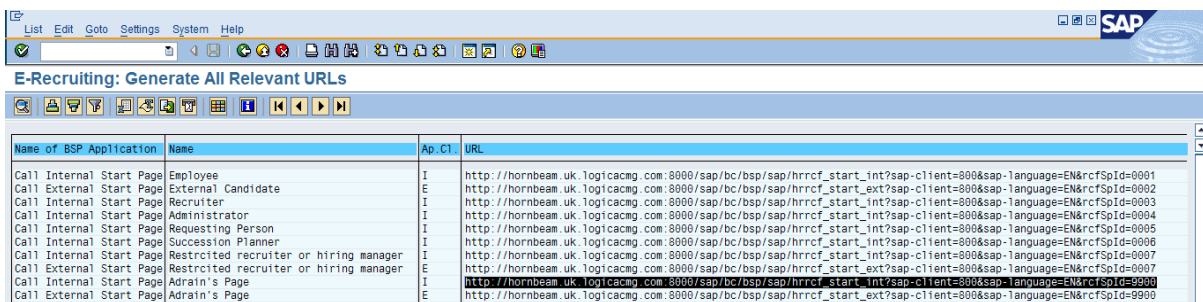
Complete as follows:



6. Go to SE38 & use report RCF\_GENERATE\_URLS



Select the appropriate link:



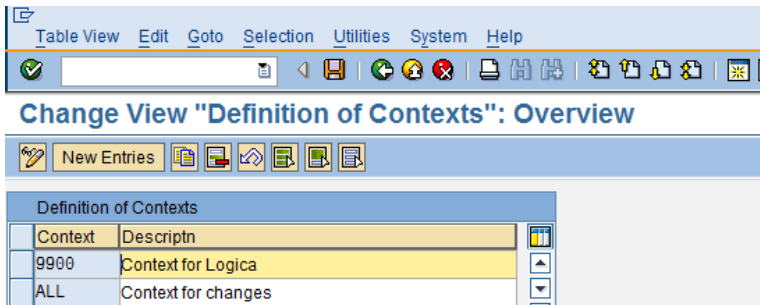
7. Paste into the browser.

**Exercise Two: Change the Container Sequence**

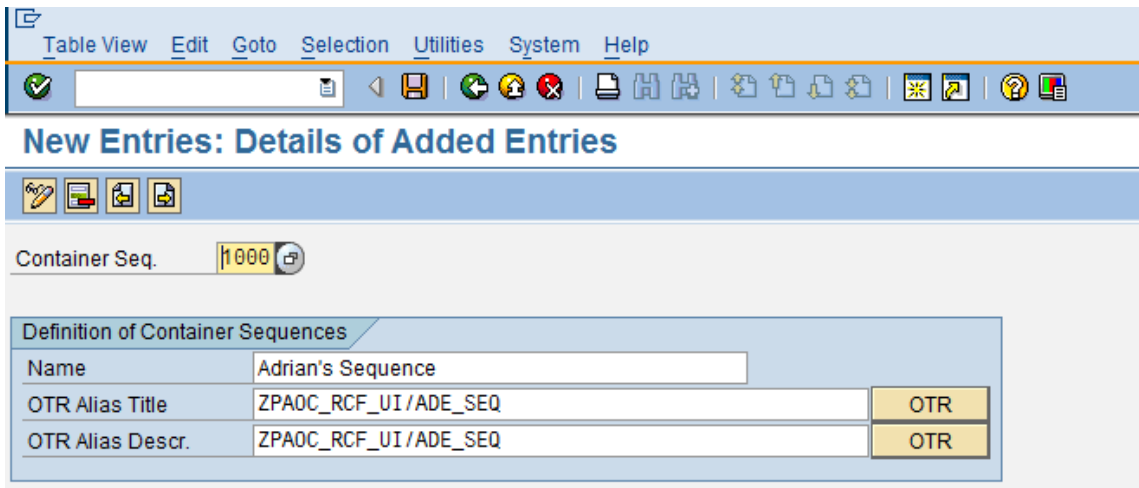
1. IMG: Flexibilisation > Container sequences > Modify Container Sequences

(Table: V77RCF\_CONTEXT)

Create a new entry:



2. IMG: Modify Container Sequences: (Table: V77RCF\_CS\_IDC)



Go to table: V77RCF\_CS\_SEQC

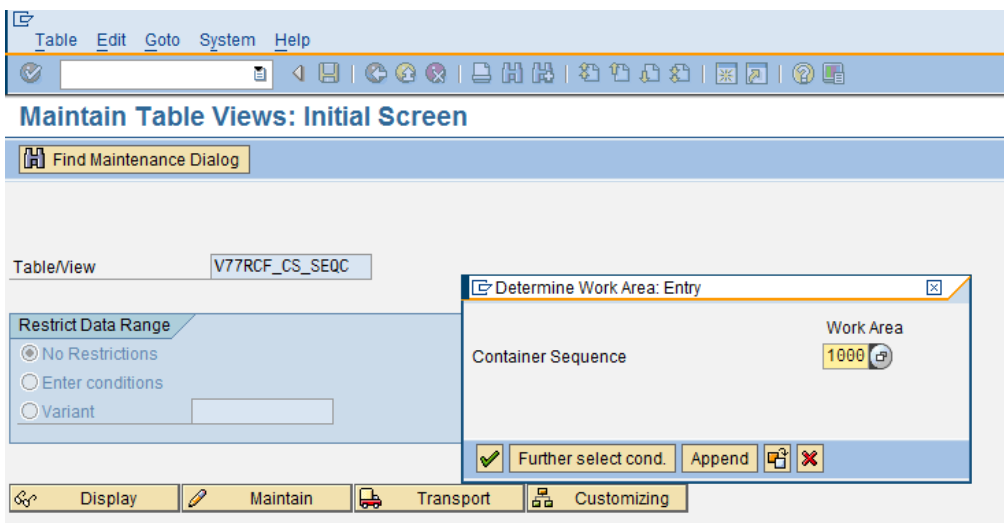




Table View Edit Goto Selection Utilities System Help

**New Entries: Overview of Added Entries**

Container Seq. 1000  
Name Adrian's Sequence

Assignments of Elements to Container Sequence

Context	Name	No.	Element	Name
9900	Context for Logica	0001	1000	Requisition: General Job Inform
9900	Context for Logica	0002	1001	Support Team
9900	Context for Logica	0003	1002	Requisition: Job Requirements

3. Generate the new URL as follows:
  - Go to SE38 and execute report RCF\_GENRATE\_URLS
  - Make the following selections:

Program Edit Goto System Help

**E-Recruiting: Generate All Relevant URLs**

Log  
 HTTP  
 HTTPS

Select Language  
 Language EN

Select Context  
 Context 9900

- Select the appropriate URL:

List Edit Goto Settings System Help

**E-Recruiting: Generate All Relevant URLs**

Application	Name	Ap. Cl.	URL
Start Page	Employee	I	http://hornbeam.uk.logicacmg.com:8000/sap/bc/bsp/sap/hrrcf_start_int?sap-client=800&sap-language=EN&rfSpId=0001&rcfContext=9900
Start Page	External Candidate	E	http://hornbeam.uk.logicacmg.com:8000/sap/bc/bsp/sap/hrrcf_start_ext?sap-client=800&sap-language=EN&rfSpId=0002&rcfContext=9900
Start Page	Recruiter	I	http://hornbeam.uk.logicacmg.com:8000/sap/bc/bsp/sap/hrrcf_start_int?sap-client=800&sap-language=EN&rfSpId=0003&rcfContext=9900
Start Page	Administrator	I	http://hornbeam.uk.logicacmg.com:8000/sap/bc/bsp/sap/hrrcf_start_int?sap-client=800&sap-language=EN&rfSpId=0004&rcfContext=9900
Start Page	Requesting Person	I	http://hornbeam.uk.logicacmg.com:8000/sap/bc/bsp/sap/hrrcf_start_int?sap-client=800&sap-language=EN&rfSpId=0005&rcfContext=9900
Start Page	Succession Planner	I	http://hornbeam.uk.logicacmg.com:8000/sap/bc/bsp/sap/hrrcf_start_int?sap-client=800&sap-language=EN&rfSpId=0006&rcfContext=9900
Start Page	Restricted recruiter or hiring manager	I	http://hornbeam.uk.logicacmg.com:8000/sap/bc/bsp/sap/hrrcf_start_int?sap-client=800&sap-language=EN&rfSpId=0007&rcfContext=9900
Start Page	Restricted recruiter or hiring manager	E	http://hornbeam.uk.logicacmg.com:8000/sap/bc/bsp/sap/hrrcf_start_ext?sap-client=800&sap-language=EN&rfSpId=0007&rcfContext=9900
Start Page	Admin's Page	I	http://hornbeam.uk.logicacmg.com:8000/sap/bc/bsp/sap/hrrcf_start_ext?sap-client=800&sap-language=EN&rfSpId=9900&rcfContext=9900
Start Page	Admin's Page	E	http://hornbeam.uk.logicacmg.com:8000/sap/bc/bsp/sap/hrrcf_start_ext?sap-client=800&sap-language=EN&rfSpId=9900&rcfContext=9900
Start Page	Maintain Agencies	I	http://hornbeam.uk.logicacmg.com:8000/sap/bc/bsp/sap/hrrcf_start_int?sap-client=800&sap-language=EN&rfLogApp1=AGENCY_MNT&rcfContext=9900
Start Page	Maintain Agencies	E	http://hornbeam.uk.logicacmg.com:8000/sap/bc/bsp/sap/hrrcf_start_ext?sap-client=800&sap-language=EN&rfLogApp1=AGENCY_MNT&rcfContext=9900
T	List of Applications / Candidates	T	http://hornbeam.uk.logicacmg.com:8000/sap/bc/bsp/sap/hrrcf_start_int?sap-client=800&sap-language=EN&rfLogApp1=APPL_T&TTM&rcfContext=9900



**Exercise Three: Hide Fields**

**Change View "Flexibilization": Overview**

Namespace/Application/Page	Context	Fld	Value
SAP/HRRCF_PERS_DATA/PERSDATA_M_BSP	DEMO	BIRTHDATE	Hidden (Item Considered for)
SAP/HRRCF_PERS_DATA/PERSDATA_M_BSP	DEMO	GENDER	Invisible (Item is not Co

**Technical Information**

**Screen Data**  
 Program Name: SAPLHR\_RCF\_CUST\_02  
 Screen number: 1073

**GUI Data**  
 Program Name: SAPLSVIM  
 Status: EUL6

**Field Data**  
 Table Name: VRCPFHTMLB\_FLI\_C  
 Field Name: NS\_APPL\_PAGE  
 Search Help: HRRCF01\_PHTMLBFLI\_NS\_APPL\_PAG  
 Data Element: CHAR80  
 DE Supplement: 0

**Field Description for Batch Input**  
 Screen Field: VRCPFHTMLB\_FLI\_C-NS\_APPL\_PAGE

Navigate

**Exercise Four: Configuration of Webdynpro Interfaces**

1. Go to the IMG as below:

Implementation Guide | Edit | Goto | Additional Information | Utilities | System | Help

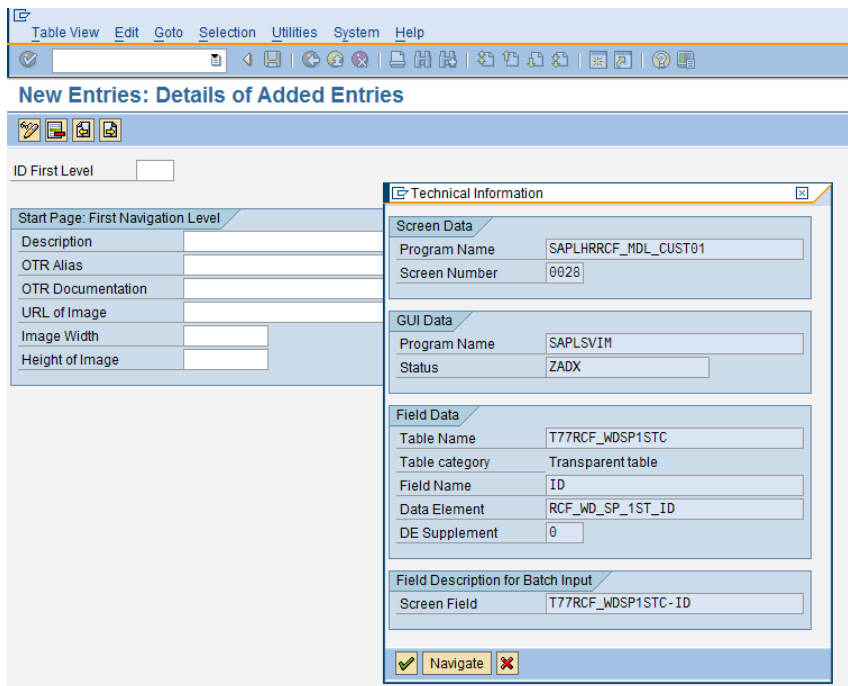
**Display IMG**

Existing BC Sets | BC Sets for Activity | Activated BC Sets for Activity

**Structure**

- ▼ SAP E-Recruiting
  - ▼ Technical Settings
    - Check System Settings
    - Set System Parameters
    - Set Up Communication Interface
    - ▶ User Administration
    - ▶ SAP Business Partner
    - ▶ Search Engine
    - ▶ Workflow
    - ▶ Periodic Services
    - ▶ SAP Web Application Server
    - ▶ Reporting
    - ▶ SAP ERP Central Component (ECC) Integration
    - ▼ User Interfaces
      - ▼ Candidate
        - ▶ Front-End Candidate
        - ▶ Backend Candidate
        - ▼ Flexibilization
          - ▶ Frontend
          - ▼ Back End
            - ▼ Start Pages
              - Create Structuring Elements for First Level!
              - Create Structuring Elements for Second Level
              - Define Start Pages
            - Roadmap Pattern
              - Create Roadmap Steps
              - Create Roadmap Pattern

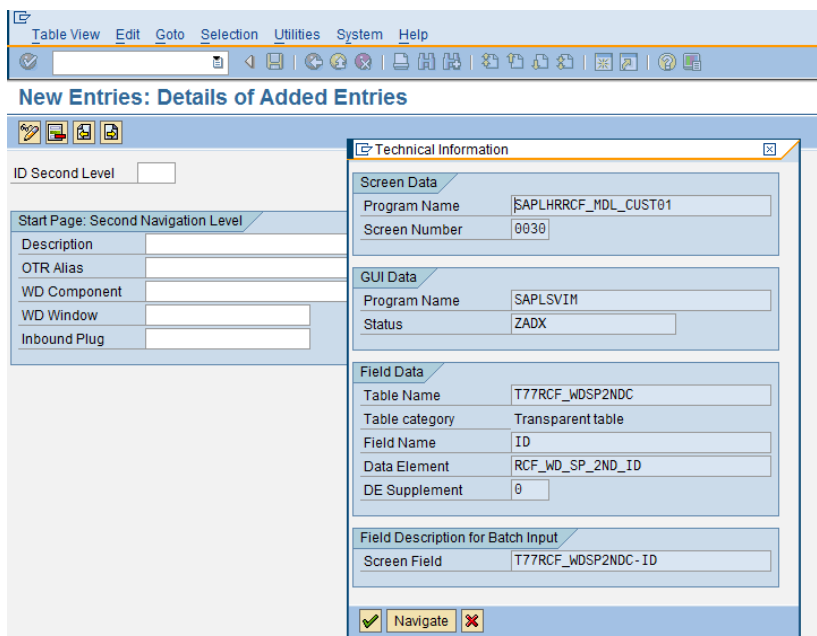
- Select 'Structuring Elements for First Level'



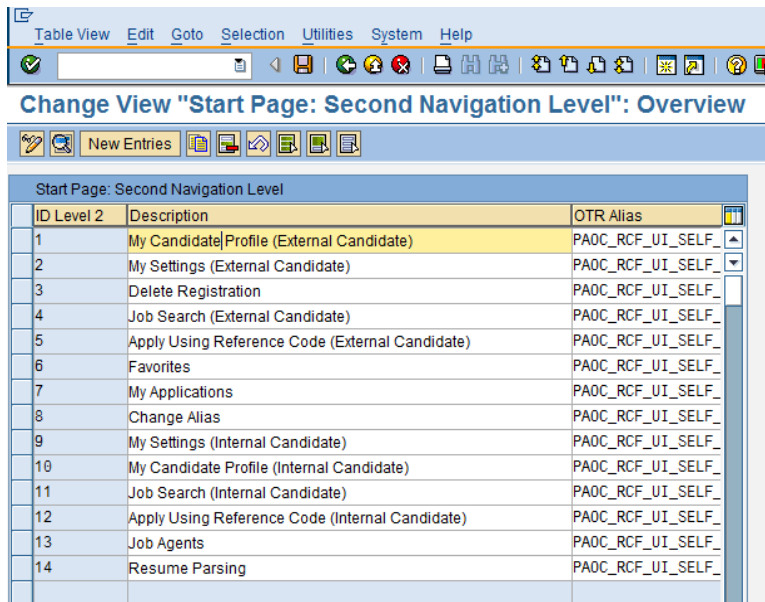
- Go to SM31 and change Table T77RCF\_WDSP1ST (no C !!!!!)

This shows you the SAP Standard Entries. These entries create the 'Tabs' in the ESS & External Candidate Screens)

2. Go back to the IMG and select the 'Create Structuring Elements for Second Level':

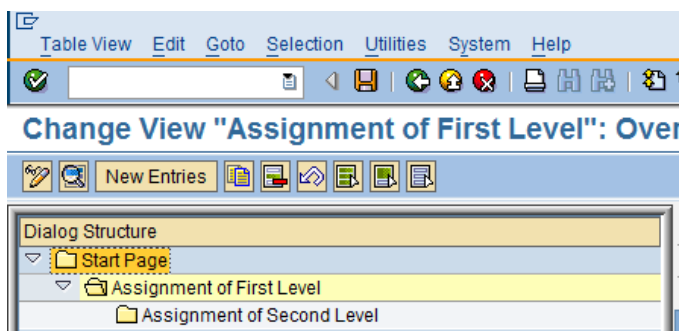


- Go to SM31 and enter table T77RCF\_WDSP2ND (without the C !!!!!)



These are the links that you see on each tab.

- Go back to the IMG. The 'Define Start Pages' is where you assign the links to the tabs and tabs to pages.....



Repeat the same principle for 'Roadmap Steps'

## Appendix One

### Queries:

#### Enhancement Pack 4

In this Customizing activity, you make all required settings for adapting SAP queries in the standard SAP E-Recruiting system and creating new queries.

At present, three InfoSets are delivered for the areas of 'Applicant Tracking' and 'Requisition Management' (maintenance in transaction SQ02), namely ERC\_APPLICATION\_MGMNT, ERC\_APPLICATION\_MGMNT, and ERC\_REQUISITION\_MGMNT. One InfoSet is provided for 'Equal Employment Opportunities' for the evaluation of EEO data with the technical name ERC\_EEO\_2003.

The InfoSets deal with different subject areas within SAP E-Recruiting and gather data using various objects. You can use the InfoSets as templates for creating your own InfoSets. The InfoSets are also used as a basis for some delivered sample queries with differing numbers of query variants.

We recommend that you use the user group, query, and query variant in a hierarchy to structure the SAP E-Recruiting queries.

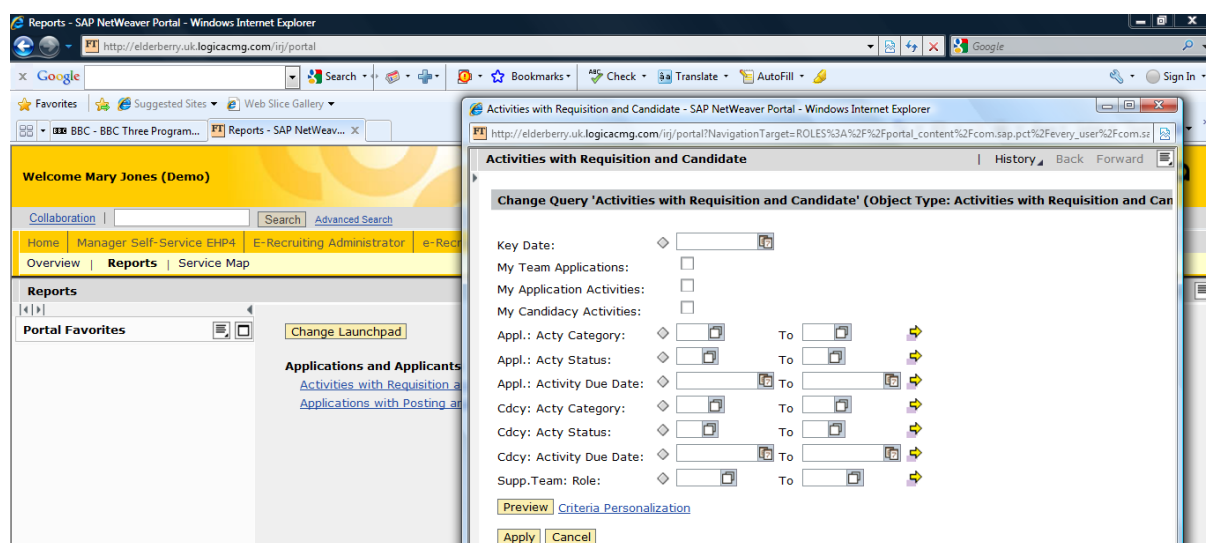
You assign the queries to the users using Role Maintenance (transaction PFCG); on the 'Personalization' tab page, you can assign a user group to the relevant role.

In the standard system, the system displays three queries in the *personal object worklist* (POWL). If you want to display your own queries in the POWL, you must first register them in the POWL.

In the standard system, the system displays two queries as Business Explorer Queries (BEx Queries) (*My Requisitions with EEO Data* and *All Rejected EEO Applicants*).

Before you can execute these queries, you must first use the transaction **RSA1** to transfer the queries to the active version in the BI Client and activate them there.

The system uses the *Reporting Launchpad* portal object to display the queries on the recruiter's user interface in the portal. SAP delivers the launchpad for the recruiter role in the standard system.





### Overview of Launchpads

New Launchpad

Role	Instance	Description	E...	C...	Di...	D...	User Name
ISRFREPL2	ISRFREPL2	For role SAP_EP_IS_R_FRE_RPL2 (BI 703+)					SCHIWEK
ISTFICACOL	ISTFICACOL	For Role SAP_EP_JST_FICA_COLL					SCHIWEK
ISUEINF	ISUEINF	For Role SAP_EP_ISU_EINF					SCHIWEK
ISUFICACOL	ISUFICACOL	For Role SAP_EP_ISU_FICA_COLL					SCHIWEK
LOCSIWCS	LOCSIWCS	For Role SAP_EP_LO_CS_IWCS					SCHIWEK
LOMMME0001	LOMMME0001	For role SAP_EP_LO_MM_ME01_01					SCHIWEK
LOQMMCVQ	LOQMMCVQ	for role SAP_EP_LO_QM_MCVQ					SCHIWEK
LOSDVA00	LOSDVA00	For Role SAP_EP_LO_SD_VA00					SCHIWEK
LOWB20N	LOWB20N	Reports for role SAP_EP_LO_WB20N					SCHIWEK
LOWZR0	LOWZR0	Reports for role SAP_EP_LO_WZR0					SCHIWEK
MP	REP	Report Launchpad for Maint. Planner					BABUSUR
MS	REP	Report Launchpad for Maint. Supervisor					BABUSUR
MSS	CLMON	Posting monitor for cost centers					LOEWH
MSS	CVMON	Variance monitor for cost centers					LOEWH
MSS	OLMON	Posting monitor for internal orders					LOEWH
MSS	OVMON	Variance monitor for internal orders					LOEWH
MT	REP	Report Launchpad for Maint. Technician					EMPLOYEE05
PLM	GENERAL_BASIS	General Navigation					BUERNER
PS	REP						MARKUSRA
QI	REP	Report Launchpad for Quality Inspector					GOYALAN
<b>RECRUITER</b>	<b>REPORTS</b>	<b>Recruiter LaunchPad</b>					<b>DOPFERHIRTH</b>
RWASMN	RWASMN	For Role SAP_EP_RW_ASMN					SCHIWEK
RWCOCK00	RWCOCK00	Reports for role SAP_RW_CO_CK00					SCHIWEK
RWCOCKML	RWCOCKML	Reports for role SAP_RW_CO_CKML					SCHIWEK
RWCOCPMN	RWCOCPMN	Reports for role SAP_RW_CO_CPMN					SCHIWEK
RWCOCPRO	RWCOCPRO	Reports for role SAP_RW_CO_CPROJECTS					SCHIWEK

Launchpad Edit Goto Extras System Help

Change Launchpad Role: RECRUITER Instance: REPORTS

New Folder New Application Add Separator Delete Copy from other Launchpad Search

	Appl Descr	SysAlias	Params
Recruiter LaunchPad	Folder		
Inactive Applications	Folder		
Applications and Applicants	Folder		
Activities with Requisition and Candidate	Webdynpro ABAP	SAP_ECC_ERRecruit...	sap POWL WDK_REPORTING APPLID=%2IE...
Applications with Posting and Requisition	Webdynpro ABAP	SAP_ECC_ERRecruit...	sap POWL WDK_REPORTING APPLID=%2IE...
EEO Data	Folder		